

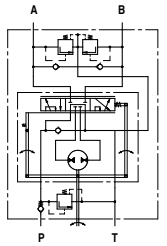
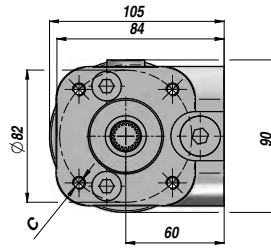
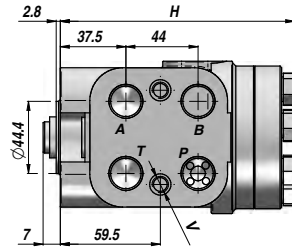
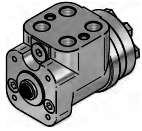
**DIG2S...-1**

**IDROGUIDA "Z-J HYDRAULIC"**  
**"Z-J HYDRAULIC" STEERING UNIT**  
**HYDROLENKUNG "Z-J HYDRAULIC"**

**CENTRO APERTO**  
**OPEN CENTER**  
**OFFENE MITTELSTELLUNG**

**NON REATTIVA**  
**NON LOAD REACTION**  
**OHNE REAKTION BEI BELASTUNG**

**CON VALVOLE**  
**WITH VALVES**  
**MIT VENTILEN**



Codice Code Bestell-Nr.	Tipo Type Typ	cm <sup>3</sup> /giro cm <sup>3</sup> /rev cm <sup>3</sup> /U	VMP RF DBV bar	VAS SV SV bar	P MAX bar	P-T A-B BSP	V (x 2)	C (x 4)	H	kg
DIG2S105010E	DIG2S-1-050-10-E	50							140,0	6,00
DIG2S108010E	DIG2S-1-080-10-E	80							144,0	6,20
DIG2S110010E	DIG2S-1-100-10-E	100							146,0	6,30
DIG2S112510E	DIG2S-1-125-10-E	125	100	160	160	1/2"	M10x1	M10	149,0	6,40
DIG2S116010E	DIG2S-1-160-10-E	160							154,0	6,60
DIG2S120010E	DIG2S-1-200-10-E	200							159,0	6,80
DIG2S125010E	DIG2S-1-250-10-E	250							165,0	7,00
DIG2S131510E	DIG2S-1-315-10-E	315							175,0	7,40

VALVOLE INCORPORATE: NON RITORNO + LIMITATRICE DI PRESSIONE (VMP) + ANTICAVITAZIONE + ANTI-SHOCK (VAS)  
 BUILT-IN VALVES: CHECK VALVE + RELIEF VALVE (RF) + ANTICAVITATION VALVES + SHOCK VALVES (SV)  
 EINGebaute Ventile: RÜCKSCHLAGVENTIL + DB VENTIL (DBV) + ANTI-KAVITATIONSVENTIL + SCHOCKVENTIL (SV)