

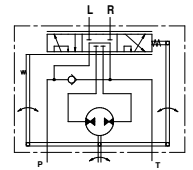
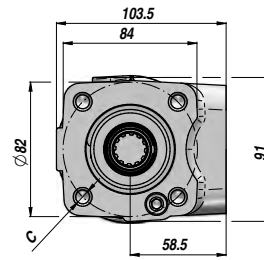
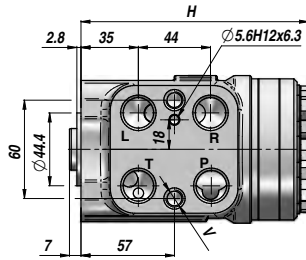
**HKU.../4**

**IDROGUIDA "M+S HYDRAULIC"**  
 "M+S HYDRAULIC" STEERING UNIT  
 HYDROLENKUNG "M+S HYDRAULIC"

**CENTRO APERTO**  
 OPEN CENTER  
 OFFENE MITTELSTELLUNG

**NON REATTIVA**  
 NON LOAD REACTION  
 OHNE REAKTION BEI BELASTUNG

**SENZA VALVOLE**  
 WITHOUT VALVES  
 OHNE VENTILEN



Codice Code Bestell-Nr.	Tipo Type Typ	cm <sup>3</sup> /giro cm <sup>3</sup> /rev cm <sup>3</sup> /U	VMP RF DBV bar	VAS SV SV bar	P MAX bar	P-T R-L BSP	V (x 2)	C (x 4)	H	kg
DHKU004410	HKU 40/4	39,6			140				130,8	5,30
DHKU005410	HKU 50/4	49,5			140				132,2	5,40
DHKU006410	HKU 63/4	65,6			170				133,9	5,50
DHKU008410	HKU 80/4	79,2			170				136,2	5,60
DHKU010410	HKU 100/4	99,0			170				138,8	5,70
DHKU012410	HKU 125/4	123,8			170				142,2	5,80
DHKU016410	HKU 160/4	158,4			170				146,8	6,00
DHKU020410	HKU 200/4	198,0	-	-	170	1/2"	M10x1	M10	152,2	6,30
DHKU025410	HKU 250/4	247,5			170				158,8	6,50
DHKU032410	HKU 320/4	316,8			170				168,2	7,00
DHKU040410	HKU 400/4	396,0			170				178,8	7,40
DHKU050410	HKU 500/4	495,0			170				192,0	8,00
DHKU063410	HKU 630/4	623,6			140				209,3	8,70
DHKU080410	HKU 800/4	793,0			140				232,2	9,60
DHKU100410	HKU1000/4	990,0			100				258,6	10,60

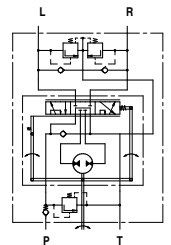
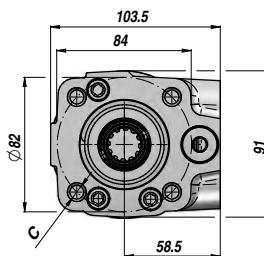
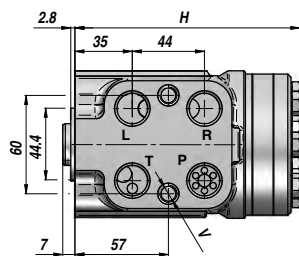
**HKUS.../4**

**IDROGUIDA "M+S HYDRAULIC"**  
 "M+S HYDRAULIC" STEERING UNIT  
 HYDROLENKUNG "M+S HYDRAULIC"

**CENTRO APERTO**  
 OPEN CENTER  
 OFFENE MITTELSTELLUNG

**NON REATTIVA**  
 NON LOAD REACTION  
 OHNE REAKTION BEI BELASTUNG

**CON VALVOLE**  
 WITH VALVES  
 MIT VENTILEN



Codice Code Bestell-Nr.	Tipo Type Typ	cm <sup>3</sup> /giro cm <sup>3</sup> /rev cm <sup>3</sup> /U	VMP RF DBV bar	VAS SV SV bar	P MAX bar	P-T R-L BSP	V (x 2)	C (x 4)	H	kg
DHKUS04410	HKUS 40/4/100	39,6			140				130,8	5,30
DHKUS05410	HKUS 50/4/100	49,5			140				132,2	5,40
DHKUS06410	HKUS 63/4/100	65,6			170				133,9	5,50
DHKUS08410	HKUS 80/4/100	79,2			170				136,2	5,60
DHKUS10410	HKUS 100/4/100	99,0			170				138,8	5,70
DHKUS12410	HKUS 125/4/100	123,8			170				142,2	5,80
DHKUS16410	HKUS 160/4/100	158,4	100	160	170	1/2"	M10x1	M10	146,8	6,00
DHKUS20410	HKUS 200/4/100	198,0			170				152,2	6,30
DHKUS25410	HKUS 250/4/100	247,5			170				158,8	6,50
DHKUS32410	HKUS 320/4/100	316,8			170				168,2	7,00
DHKUS40410	HKUS 400/4/100	396,0			170				178,8	7,40
DHKUS50410	HKUS 500/4/100	495,0			170				192,0	8,00

VALVOLE INCORPORATE: VALVOLA NON RITORNO + VALVOLA LIMITATRICE DI PRESSIONE (VMP) + VALVOLA ANTICAVITAZIONE + VALVOLA ANTI-SHOCK (VAS)  
 BUILT-IN VALVES: CHECK VALVE + RELIEF VALVE (RF) + ANTICAVITATION VALVES + SHOCK VALVES (SV)  
 EINGEBAUTE VENTILE: RÜCKSCHLAGVENTIL + DB VENTIL (DBV) + ANTI-KAVITATIONSVENTIL + SCHOCKVENTIL (SV)