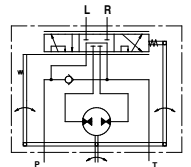
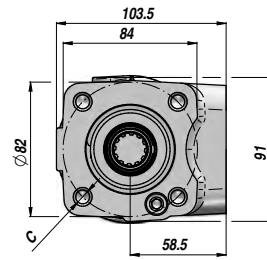
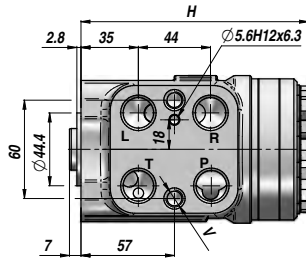
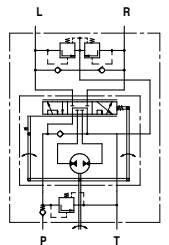
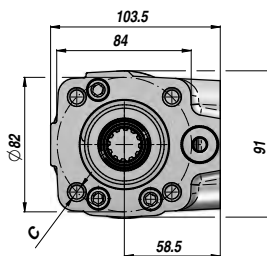
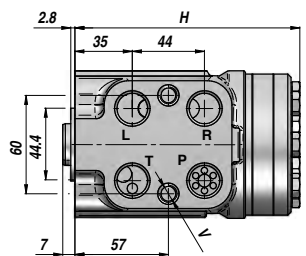


HKU.../4 **IDROGUIDA "M+S HYDRAULIC" CENTRO APERTO** **NON REATTIVA** **SENZA VALVOLE**
"M+S HYDRAULIC" STEERING UNIT **OPEN CENTER** **NON LOAD REACTION** **WITHOUT VALVES**
HYDROLENKUNG "M+S HYDRAULIC" **OFFENE MITTELSTELLUNG** **OHNE REAKTION BEI BELASTUNG** **OHNE VENTILEN**



| Codice Code Bestell-Nr. | Tipo Type Typ | cm ³ /giro cm ³ /rev cm ³ /U | VMP RF DBV bar | VAS SV SV bar | P MAX bar | P-T R-L BSP | V (x 2) | C (x 4) | H | kg |
|-------------------------|---------------|---|----------------|---------------|-----------|-------------|---------|---------|-------|-------|
| DHKU004410 | HKU 40/4 | 39,6 | | | 140 | | | | 130,8 | 5,30 |
| DHKU005410 | HKU 50/4 | 49,5 | | | 140 | | | | 132,2 | 5,40 |
| DHKU006410 | HKU 63/4 | 65,6 | | | 170 | | | | 133,9 | 5,50 |
| DHKU008410 | HKU 80/4 | 79,2 | | | 170 | | | | 136,2 | 5,60 |
| DHKU010410 | HKU 100/4 | 99,0 | | | 170 | | | | 138,8 | 5,70 |
| DHKU012410 | HKU 125/4 | 123,8 | | | 170 | | | | 142,2 | 5,80 |
| DHKU016410 | HKU 160/4 | 158,4 | | | 170 | | | | 146,8 | 6,00 |
| DHKU020410 | HKU 200/4 | 198,0 | - | - | 170 | 1/2" | M10x1 | M10 | 152,2 | 6,30 |
| DHKU025410 | HKU 250/4 | 247,5 | | | 170 | | | | 158,8 | 6,50 |
| DHKU032410 | HKU 320/4 | 316,8 | | | 170 | | | | 168,2 | 7,00 |
| DHKU040410 | HKU 400/4 | 396,0 | | | 170 | | | | 178,8 | 7,40 |
| DHKU050410 | HKU 500/4 | 495,0 | | | 170 | | | | 192,0 | 8,00 |
| DHKU063410 | HKU 630/4 | 623,6 | | | 140 | | | | 209,3 | 8,70 |
| DHKU080410 | HKU 800/4 | 793,0 | | | 140 | | | | 232,2 | 9,60 |
| DHKU100410 | HKU1000/4 | 990,0 | | | 100 | | | | 258,6 | 10,60 |

HKUS.../4 **IDROGUIDA "M+S HYDRAULIC" CENTRO APERTO** **NON REATTIVA** **CON VALVOLE**
"M+S HYDRAULIC" STEERING UNIT **OPEN CENTER** **NON LOAD REACTION** **WITH VALVES**
HYDROLENKUNG "M+S HYDRAULIC" **OFFENE MITTELSTELLUNG** **OHNE REAKTION BEI BELASTUNG** **MIT VENTILEN**



| Codice Code Bestell-Nr. | Tipo Type Typ | cm ³ /giro cm ³ /rev cm ³ /U | VMP RF DBV bar | VAS SV SV bar | P MAX bar | P-T R-L BSP | V (x 2) | C (x 4) | H | kg |
|-------------------------|----------------|---|----------------|---------------|-----------|-------------|---------|---------|-------|------|
| DHKUS04410 | HKUS 40/4/100 | 39,6 | | | 140 | | | | 130,8 | 5,30 |
| DHKUS05410 | HKUS 50/4/100 | 49,5 | | | 140 | | | | 132,2 | 5,40 |
| DHKUS06410 | HKUS 63/4/100 | 65,6 | | | 170 | | | | 133,9 | 5,50 |
| DHKUS08410 | HKUS 80/4/100 | 79,2 | | | 170 | | | | 136,2 | 5,60 |
| DHKUS10410 | HKUS 100/4/100 | 99,0 | | | 170 | | | | 138,8 | 5,70 |
| DHKUS12410 | HKUS 125/4/100 | 123,8 | | | 170 | | | | 142,2 | 5,80 |
| DHKUS16410 | HKUS 160/4/100 | 158,4 | 100 | 160 | 170 | 1/2" | M10x1 | M10 | 146,8 | 6,00 |
| DHKUS20410 | HKUS 200/4/100 | 198,0 | | | 170 | | | | 152,2 | 6,30 |
| DHKUS25410 | HKUS 250/4/100 | 247,5 | | | 170 | | | | 158,8 | 6,50 |
| DHKUS32410 | HKUS 320/4/100 | 316,8 | | | 170 | | | | 168,2 | 7,00 |
| DHKUS40410 | HKUS 400/4/100 | 396,0 | | | 170 | | | | 178,8 | 7,40 |
| DHKUS50410 | HKUS 500/4/100 | 495,0 | | | 170 | | | | 192,0 | 8,00 |

VALVOLE INCORPORATE: VALVOLA NON RITORNO + VALVOLA LIMITATRICE DI PRESSIONE (VMP) + VALVOLA ANTICAVITAZIONE + VALVOLA ANTI-SHOCK (VAS)
 BUILT-IN VALVES: CHECK VALVE + RELIEF VALVE (RF) + ANTICAVITATION VALVES + SHOCK VALVES (SV)
 EINGEBAUTE VENTILE: RÜCKSCHLAGVENTIL + DB VENTIL (DBV) + ANTI-KAVITATIONSVENTIL + SCHOCKVENTIL (SV)