

IDROGUIDA "M+S HYDRAULIC"
"M+S HYDRAULIC" STEERING UNIT
HYDROLENKUNG "M+S HYDRAULIC"

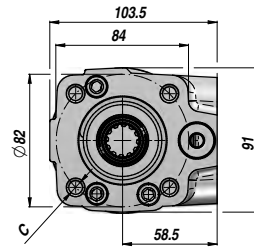
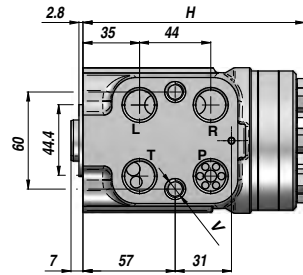
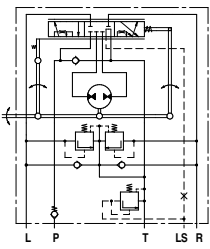
CENTRO CHIUSO
CLOSED CENTER
GESCHL. MITTELSTELLUNG

NON REATTIVA
NON LOAD REACTION
OHNE REAKTION BEI BELASTUNG

CON VALVOLE
WITH VALVES
MIT VENTILEN

HKUS.../5

LOAD SENSING



Codice Code Bestell-Nr.	Tipo Type Typ	cm ³ /giro cm ³ /rev cm ³ /U	VMP RF DBV bar	VAS SV SV bar	P MAX bar	P-T R-L BSP	V (x 2)	C (x 4)	H	kg
DHKUS50401	HKUS 40/5/100	39,6			125				130,8	5,30
DHKUS50501	HKUS 50/5/100	49,5			150				132,2	5,40
DHKUS50601	HKUS 63/5/100	65,6			175				133,9	5,50
DHKUS50801	HKUS 80/5/100	79,2			175				136,2	5,60
DHKUS51001	HKUS 100/5/100	99,0			175				138,8	5,70
DHKUS51201	HKUS 125/5/100	123,8	100	160	175	1/2"	M10x1	M10	142,2	5,80
DHKUS51601	HKUS 160/5/100	158,4			175				146,8	6,00
DHKUS52001	HKUS 200/5/100	198,0			175				152,2	6,30
DHKUS52501	HKUS 250/5/100	247,5			175				158,8	6,50
DHKUS53201	HKUS 320/5/100	316,8			175				168,2	7,00
DHKUS54001	HKUS 400/5/100	396,0			175				178,8	7,40

VALVOLE INCORPORATE: VALVOLA NON RITORNO + VALVOLA LIMITATRICE DI PRESSIONE (VMP) + VALVOLA ANTICAVITAZIONE + VALVOLA ANTI-SHOCK (VAS)
BUILT-IN VALVES: CHECK VALVE + RELIEF VALVE (RF) + ANTICAVITATION VALVES + SHOCK VALVES (SV)
EINGEBAUTE VENTILE: RÜCKSCHLAGVENTIL + DB VENTIL (DBV) + ANTI-KAVITATIONSVENTIL + SCHOCKVENTIL (SV)

HKUS.../5 = PER VALVOLA PRIORITARIA FLANGIABILE - FOR FACE MOUNTING PRIORITY VALVE - FÜR MODULARES VORZUGSVENTIL

A RICHIESTA - ON REQUEST - AUF ANFRAGE:

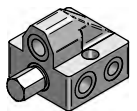
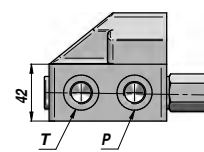
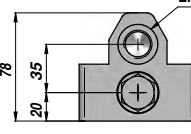
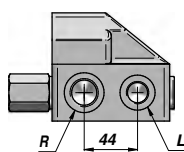
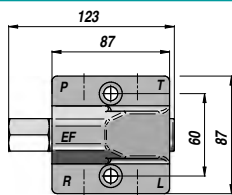
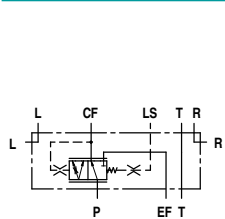
HKUS.../5T = PER VALVOLA PRIORITARIA IN LINEA - FOR PIPE MOUNTING PRIORITY VALVE - FÜR REIHEN-VORZUGSVENTIL

HKUS.../5D - HKUS.../5DT = CON SEGNALE DINAMICO - WITH DYNAMIC SIGNAL - MIT DYNAMISCHEM SIGNAL

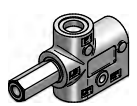
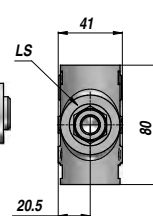
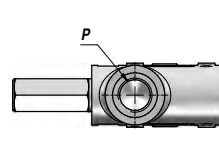
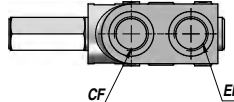
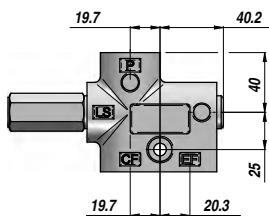
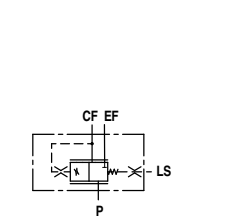
VALVOLA PRIORITARIA PER IDROGUIDA LOAD-SENSING
PRIORITY VALVE FOR LOAD-SENSING STEERING UNIT
VORZUGSVENTIL FÜR LOAD-SENSING HYDROLENKUNG

VPRD

VPRTA



PRD - STATIC SIGNAL



PRTA - STATIC SIGNAL

Codice Code Bestell-Nr.	Tipo Type Typ	Segnale Signal Signal	Q MAX l/min	Molla Spring Feder	P - EF BSP	T - R - L BSP	CF BSP	LS BSP	kg
VPRD0800 **	PRD 80/** (x HKUS.../5)	Static	80	4-7-10 bar	1/2"	3/8"			2,25
VPRDD080 **	PRD-D 80/** (x HKUS.../5)	Dynamic	80	4-7-10 bar	1/2"	3/8"			2,25
VPRTA080 **	PRTA 80/** (x HKUS.../5T)	Static	80	4-7-10 bar	1/2"		1/2"	1/4"	1,30
VPRTAD08 **	PRTA-D 80/** (x HKUS.../5T)	Dynamic	80	4-7-10 bar	1/2"		1/2"	1/4"	1,30

** = 04 - 07 - 10 bar