

**IDROGUIDA "M+S HYDRAULIC"**  
"M+S HYDRAULIC" STEERING UNIT  
HYDROLENKUNG "M+S HYDRAULIC"

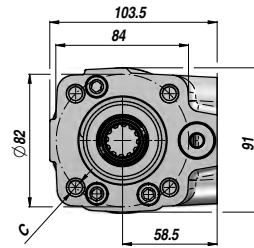
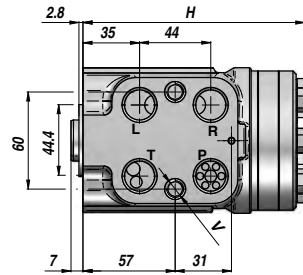
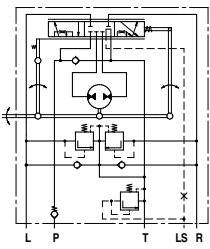
**CENTRO CHIUSO**  
CLOSED CENTER  
GESCHL. MITTELSTELLUNG

**NON REATTIVA**  
NON LOAD REACTION  
OHNE REAKTION BEI BELASTUNG

**CON VALVOLE**  
WITH VALVES  
MIT VENTILEN

**HKUS.../5**

**LOAD SENSING**



Codice Code Bestell-Nr.	Tipo Type Typ	cm <sup>3</sup> /giro cm <sup>3</sup> /rev cm <sup>3</sup> /U	VMP RF DBV bar	VAS SV SV bar	P MAX bar	P-T R-L BSP	V (x 2)	C (x 4)	H	kg
DHKUS50401	HKUS 40/5/100	39,6			125				130,8	5,30
DHKUS50501	HKUS 50/5/100	49,5			150				132,2	5,40
DHKUS50601	HKUS 63/5/100	65,6			175				133,9	5,50
DHKUS50801	HKUS 80/5/100	79,2			175				136,2	5,60
DHKUS51001	HKUS 100/5/100	99,0			175				138,8	5,70
DHKUS51201	HKUS 125/5/100	123,8	100	160	175	1/2"	M10x1	M10	142,2	5,80
DHKUS51601	HKUS 160/5/100	158,4			175				146,8	6,00
DHKUS52001	HKUS 200/5/100	198,0			175				152,2	6,30
DHKUS52501	HKUS 250/5/100	247,5			175				158,8	6,50
DHKUS53201	HKUS 320/5/100	316,8			175				168,2	7,00
DHKUS54001	HKUS 400/5/100	396,0			175				178,8	7,40

VALVOLE INCORPORATE: VALVOLA NON RITORNO + VALVOLA LIMITATRICE DI PRESSIONE (VMP) + VALVOLA ANTICAVITAZIONE + VALVOLA ANTI-SHOCK (VAS)  
BUILT-IN VALVES: CHECK VALVE + RELIEF VALVE (RF) + ANTICAVITATION VALVES + SHOCK VALVES (SV)  
EINGebaute VENTILE: RÜCKSCHLAGVENTIL + DB VENTIL (DBV) + ANTI-KAVITATIONSVENTIL + SCHOCKVENTIL (SV)

HKUS.../5 = PER VALVOLA PRIORITARIA FLANGIABILE - FOR FACE MOUNTING PRIORITY VALVE - FÜR MODULARES VORZUGSVENTIL

A RICHIESTA - ON REQUEST - AUF ANFRAGE:

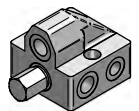
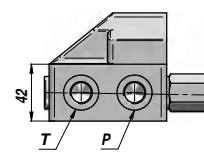
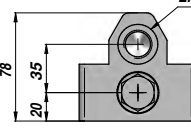
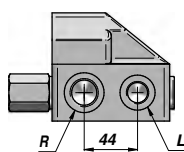
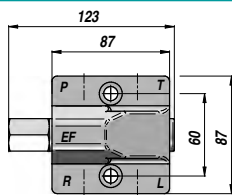
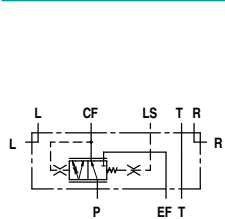
HKUS.../5T = PER VALVOLA PRIORITARIA IN LINEA - FOR PIPE MOUNTING PRIORITY VALVE - FÜR REIHEN-VORZUGSVENTIL

HKUS.../5D - HKUS.../5DT = CON SEGNALE DINAMICO - WITH DYNAMIC SIGNAL - MIT DYNAMISCHEM SIGNAL

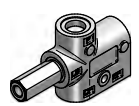
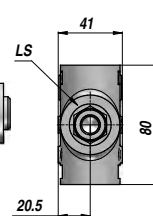
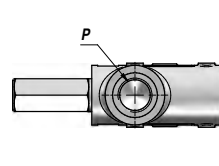
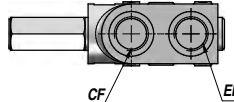
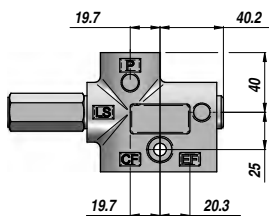
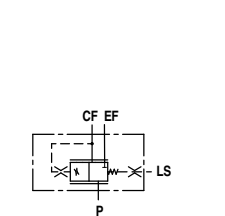
**VALVOLA PRIORITARIA PER IDROGUIDA LOAD-SENSING**  
PRIORITY VALVE FOR LOAD-SENSING STEERING UNIT  
VORZUGSVENTIL FÜR LOAD-SENSING HYDROLENKUNG

**VPRD**

**VPRTA**



**PRD - STATIC SIGNAL**



**PRTA - STATIC SIGNAL**

Codice Code Bestell-Nr.	Tipo Type Typ	Segnale Signal Signal	Q MAX l/min	Molla Spring Feder	P - EF BSP	T - R - L BSP	CF BSP	LS BSP	kg
VPRD0800 **	PRD 80/** (x HKUS.../5)	Static	80	4-7-10 bar	1/2"	3/8"			2,25
VPRDD080 **	PRD-D 80/** (x HKUS.../5)	Dynamic	80	4-7-10 bar	1/2"	3/8"			2,25
VPRTA080 **	PRTA 80/** (x HKUS.../5T)	Static	80	4-7-10 bar	1/2"		1/2"	1/4"	1,30
VPRTAD08 **	PRTA-D 80/** (x HKUS.../5T)	Dynamic	80	4-7-10 bar	1/2"		1/2"	1/4"	1,30

\*\* = 04 - 07 - 10 bar